

we redefine

Specially Formulated Consumables



We're the UK's leading experts in designing and developing machinery and consumables for mass finishing applications.

we redefine:

Vibratory Finishing

High Energy Finishing

Consumables

Precision Polishing

Subcontract Services

Why Choose Us?

We're a family run business that pride ourselves on working as a strong, unified team of specialists.

We believe in British

Born in the United Kingdom, we are unique in our product design and the manufacture of our specialist machines and consumables.

We're here for you

Being based in the heart of the country means we have easy access to all of our clients.

We have experience

With five decades of experience and knowledge in the finishing industry, we know what works for you.

We provide options

We have an impressive range of media and compounds to choose from, including one of the best polishing compounds in the market. We also provide a wide range of machinery and subcontract services to meet all of your needs.

We go the extra mile

We'll tailor our services to your needs, not the other way round. Our service is all about you.



Man x Machine x Media = M³

The thinking behind our consumables.



Over the years, we have been at the forefront of the industry, developing a range of specially formulated consumables approved by the manufacturing industry.

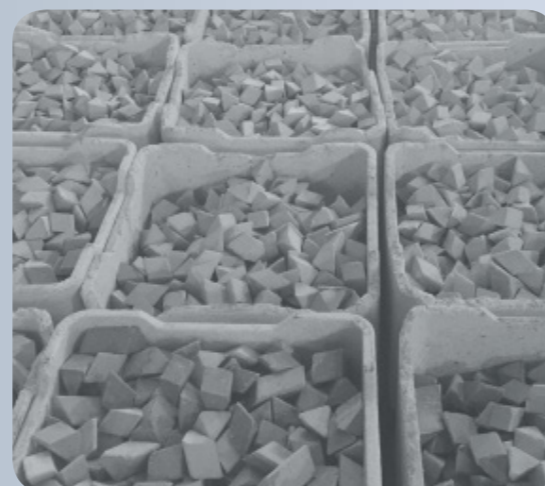
Working closely with highly skilled manufacturers, our Engineers understand the numerous challenges faced in the industry and have developed suitable consumables accordingly. Our R&D department always sets high standards for the environmentally friendly, biodegradable compounds and high quality media.

We are highly committed to continuously developing and expanding our range of consumables to suit any given application.

Ceramic media

We manufacture our ceramic media at our facility in Kedah, Malaysia and it is subject to strict quality control to ensure our customers receive a great product every time. We have developed our own recipes and we use only high-quality raw materials to ensure the final product meets our customers' standards.

Our ceramic media is manufactured by mixing an abrasive, such as aluminium oxide, silicon carbide or quartz, with a ceramic matrix in a wet state. The matrix is extruded through various shaped dies and wire cut into small pieces. The preformed media is then fired at high temperatures through a kiln for up to 24 hours with precise heat up and cool down cycles. The ceramic pieces can then be pre-conditioned to remove any flash if required.



Plastic media

We manufacture our plastic media using the same high standards as we do for our ceramic media. Our R&D department is continuously developing our recipes and the range of media shapes and dimensions to our customers' needs. ActOn plastic media can be used for a long time even if it wears down, as it will maintain its shape.

Our plastic media is manufactured by mixing an abrasive with a polyester or synthetic based resin fluid, with a catalyst added to harden the matrix. After media is molded into specific shapes and it hardens, this is tumbled to remove any flash.

Mass Finishing Compounds

We develop, test and continuously improve the formulation of our liquid, powder and paste compounds at our facility in Coventry, UK. This is also the place where we manufacture our compounds. All ActOn compounds are environmentally friendly and are formulated for vibratory and high energy finishing machines.

Selecting ActOn Consumables

The recipe to achieve the required surface finish involves using the correct machinery, media and compound. At ActOn, we offer the complete package. The following factors must be considered when choosing the right media and compound.

1. Type

ActOn offers different media types such as Ceramic, Plastic, Agro, Pre-Treated and Stainless Steel. The media transmits the energy generated by the equipment to the parts being processed and are capable of heavy burr removal, edge radiusing to smooth and bright surfaces.

Ceramic Media is recommended for removing burrs, edge radiusing, burnishing and to quickly remove polishing lines on components made from harder materials. Faster cut Medias are designed to be softer, thus allowing the cutting elements to be exposed. Polishing Medias are harder (which contain no abrasives) and are used for burnishing. In general, the slower the cut, the harder the media.

Plastic Media is lightweight and is manufactured out of soft bonding agents, which allows it to remove burrs without rolling the burr onto the part. Furthermore, we recommend using this media to achieve a very smooth surface finish, or a bright or matte finish on components made from softer materials.

Agro Media can be used for surface brightening or final finish refinement. The Pre-treated Media is recommended for achieving a high lustre or mirror finish on components.

Applications for Stainless Steel Media include burnishing, cleaning, improving compressive strength and light deburring.

2. Shape

When choosing the shape of the media it is important to consider the geometry of the part - hence any lodgement of media can be avoided and the part finish will be consistent.

A flat sided media, such as triangles, tri-stars, wedges and the end side of cones, can generate longer surface contact time

on edges for deburring and radiusing. However, round shaped media, such as balls, cylinders and cones generate a single point contact concentrating energy in one small point, therefore producing more work in that area.

For components which have corners, holes and slots both Tri-Star media and wedge media are recommended, minimising the possibility of media lodgement.

For surface improvement of hard to reach areas, an ellipse or cylinder shape can be considered.

3. Size

The component finish is also subject to the size of media chosen. A larger media will generate higher energy; hence it will cut and finish faster with higher wear rates. This is also recommended for processing larger parts.

A smaller media can hold more water and compound resulting in less part-on-part damage. Also, a smaller media has a gentler impact on part, which results in longer processing times, better finishes and less media wear.

Generally, media size has to be of a different size to the part to allow complete separation at the end of the finishing process. If media is larger than parts, then an inverse separation system can be used. For ferrous components, magnetic separation is also available.

4. Hardness

To avoid damaging the component, it is important to consider the part material and the hardness of the media. Ceramics are harder than plastic; hence it may cause damage to soft materials.

Compounds are integral to the success of a process. These have many functions such as suspending the dirt, oils and media residues and flushing them from the system, as well as keeping the components and media clean, which brings stability to the process. Other advantages include corrosion inhibition, brightening of different materials, and removing scale post-heat treatment. As the compound acts as a lubricant, it extends the media life.

When choosing a compound there are 3 considerations:

- 1. Process requirements:** Such as parts that need a compound with corrosion inhibitor, flat parts that can stick to each other in process will require a separating compound; or removal of heavy machine marks and burrs can be accelerated using an ActOn powder compound.
- 2. Finish requirement:** From removing heat treatment, descaling, cleaning to brightening, polishing, burnishing and more.
- 3. Component material:** ActOn has special formulated compounds for both ferrous and non-ferrous parts.

Finishing Applications

Deburring

Descaling

Degreasing & Oil Removal

Cleaning

Smoothing

Radiusing

Brightening

Polishing

Drying

Corrosion Protection

Turbocut

For rapid removal of surface defects on ferrous parts.

Chemcut

For the quick improvement of the surface finish (Ra values) on ferrous parts.

ActoGrind

For heavy removal of grinding lines using mass finishing methods.

Agro & Pre-treated Media



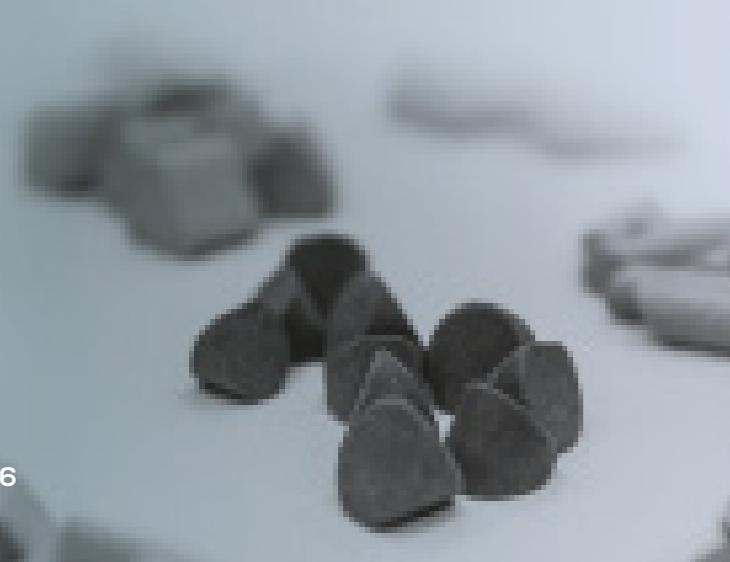
Liquid Compounds



Powders & Pastes



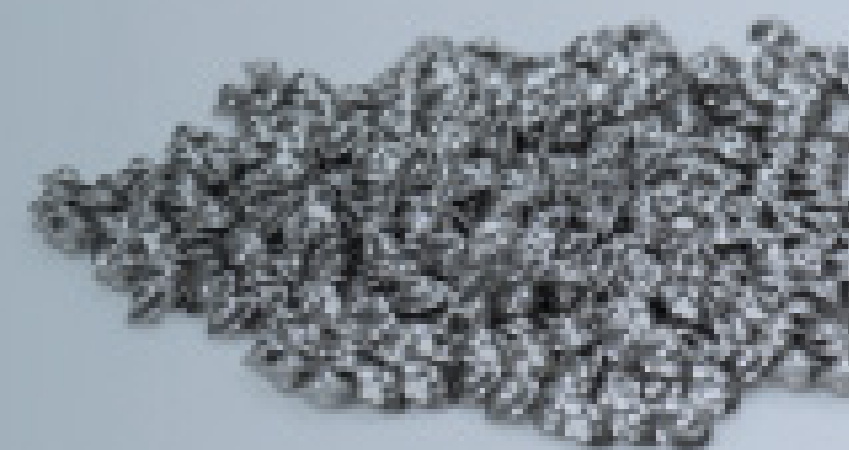
Ceramic Media



Plastic Media



Special Media



Ceramic Media

Our ceramic media comes in a variety of abrasive grades, starting from low abrasive to super finishing. This type of media is suitable for various deburring, radiusing and polishing processes, and is specially formulated to go hand-in-hand with ActOn's compounds.

ActOn ceramic media has a high strength and long wear-ability, and it is recommended to process parts manufactured out of harder materials.

How to order with ActOn:

- 1 Choose grade
Example: CC1
- 2 Choose shape
Example: Angle Cut Triangle
- 3 Choose measurement
Example: 6x6

For further dimensions and special types of media specific for your application, please contact our sales representatives.

The media grade is the product name. Based on the grinding performance and surface finish required, the appropriate grade must be chosen.

Media Grade	Grinding Performance	Surface Finish	Triangle		Cylinder	
			ACT Angle Cut	SCT Straight Cut	ACC Angle Cut	SCC Straight Cut
			a x b	a x b	a x b	a x b
P			3 x 8, 4 x 4 4 x 10, 5 x 5 5 x 10, 6 x 10 8 x 12, 9 x 9 10 x 15, 15 x 15	6 x 6 10 x 10 15 x 15	3 x 10 6 x 13 10 x 15 13 x 25	3 x 10 6 x 13 10 x 15 13 x 25
			4 x 10, 6 x 6 6 x 10, 8 x 8 10 x 10, 10 x 15 15 x 18, 13 x 13 16 x 16, 19 x 19 21 x 21, 25 x 25	6 x 6 10 x 10 13 x 13 16 x 16 19 x 19 25 x 25	3 x 10, 6 x 10 6 x 13, 7 x 15 8 x 8, 8 x 20 10 x 15, 10 x 20 13 x 25, 15 x 25 18 x 30	7 x 13 8 x 8 10 x 19
RP1			10 x 10 15 x 15 20 x 20 25 x 25 30 x 30	7 x 7, 12 x 12 15 x 15, 20 x 20 25 x 25, 30 x 30 32 x 32, 34 x 34 40 x 40, 50 x 50	10 x 15, 10 x 20 15 x 2, 15 x 25 20 x 20, 20 x 25 20 x 30, 25 x 25	10 x 15, 10 x 20 15 x 20, 15 x 25 20 x 20, 20 x 25 20 x 30, 25 x 25
			4 x 10, 6 x 6 6 x 10, 8 x 8 10 x 10, 10 x 15 15 x 18, 13 x 13 16 x 16, 19 x 19 21 x 21, 25 x 25	6 x 6 10 x 10 13 x 13 16 x 16 19 x 19 25 x 25	3 x 10, 6 x 10 6 x 13, 7 x 15 8 x 8, 8 x 20 10 x 15, 10 x 20 13 x 25, 15 x 25 18 x 30, 20 x 40	7 x 13 8 x 8 10 x 19
ST1			4 x 10, 6 x 6 6 x 10, 8 x 8 10 x 10, 10 x 15 15 x 18, 13 x 13 16 x 16, 19 x 19 21 x 21, 25 x 25	6 x 6 10 x 10 13 x 13 16 x 16 19 x 19 25 x 25	3 x 10, 6 x 10 6 x 13, 7 x 15 8 x 8, 8 x 20 10 x 15, 10 x 20 13 x 25, 15 x 25 18 x 30, 20 x 40	7 x 13 8 x 8 10 x 19
CFB			4 x 10, 6 x 6 6 x 10, 8 x 8 10 x 10, 10 x 15 15 x 18, 13 x 13 16 x 16, 19 x 19 21 x 21, 25 x 25	6 x 6 10 x 10 13 x 13 16 x 16 19 x 19 25 x 25	3 x 10, 6 x 10 6 x 13, 7 x 15 8 x 8, 8 x 20 10 x 15, 10 x 20 13 x 25, 15 x 25 18 x 30, 20 x 40	7 x 13 8 x 8 10 x 19
CC1			4 x 10, 6 x 6 6 x 10, 8 x 8 10 x 10, 10 x 15 15 x 18, 13 x 13 16 x 16, 19 x 19 21 x 21, 25 x 25	5 x 5, 6 x 6 10 x 10, 13 x 13 16 x 16, 19 x 19 25 x 25, 32 x 32	3 x 10, 6 x 10 6 x 13, 7 x 15 8 x 8, 8 x 20 10 x 15, 10 x 20 13 x 25, 15 x 25 18 x 30, 20 x 40	3 x 10, 6 x 10 6 x 13, 7 x 15 8 x 8, 8 x 20 10 x 15, 10 x 20 13 x 25, 15 x 25 18 x 30, 20 x 40
CC4			6 x 6, 6 x 6 10 x 10, 10 x 15 13 x 13, 16 x 16 19 x 19, 21 x 21 25 x 25, 32 x 32 33 x 33	6 x 6, 10 x 10 13 x 13, 16 x 16 19 x 19, 25 x 25 30 x 30, 32 x 32	3 x 10, 6 x 10 6 x 13, 7 x 15 8 x 8, 8 x 20 10 x 15, 10 x 20 13 x 25, 15 x 25 18 x 30, 20 x 40	6 x 7 7 x 13 8 x 8 10 x 19
CC8			6 x 6, 6 x 6 8 x 8, 10 x 10 10 x 15, 15 x 18 13 x 13, 16 x 16 19 x 19, 21 x 21 25 x 25, 32 x 32 33 x 33	6 x 6, 10 x 10 13 x 13, 16 x 16 19 x 19, 25 x 25 30 x 30, 32 x 32	3 x 10, 6 x 10 6 x 13, 7 x 15 8 x 8, 8 x 20 10 x 15, 10 x 20 13 x 25, 15 x 25 18 x 30, 20 x 40	6 x 7 7 x 13 8 x 8 10 x 19
SFB			4 x 10, 6 x 6 6 x 10, 8 x 8 10 x 10, 10 x 15 15 x 18, 13 x 13 16 x 16, 19 x 19 21 x 21, 25 x 25 32 x 32, 33 x 33	6 x 6, 10 x 10 13 x 13, 16 x 16 19 x 19, 25 x 25 30 x 30, 32 x 32	3 x 10, 6 x 10 6 x 13, 7 x 15 8 x 8, 8 x 20 10 x 15, 10 x 20 13 x 25, 15 x 25 18 x 30, 20 x 40	7 x 13 8 x 8 10 x 19
SFC			4 x 10, 6 x 6 6 x 10, 8 x 8 10 x 10, 10 x 15 15 x 18, 13 x 13 16 x 16, 19 x 19 21 x 21, 25 x 25 32 x 32, 33 x 33	6 x 6, 10 x 10 13 x 13, 16 x 16 19 x 19, 25 x 25 30 x 30, 32 x 32	3 x 10, 6 x 10 6 x 13, 7 x 15 8 x 8, 8 x 20 10 x 15, 10 x 20 13 x 25, 15 x 25 18 x 30, 20 x 40	7 x 13 8 x 8 10 x 19

W Wedge	S Star	TR Tristar	ACTR Angle Cut Tristar	E Ellipse	ACE Angle Cut Ellipse	AR Arrow	P Pyramid	C Cone	R Rhombus	B Ball
a x b	a x b	a x b	a x b	a x b x c	a x b x c	a x b	a x b	a	a x b x c	a
8 x 8		4 x 4 5 x 5 6 x 6 8 x 8 10 x 10	4 x 8 6 x 6 6 x 10 10 x 12	8 x 3 x 9 10 x 5 x 10 15 x 4 x 15 15 x 6 x 15 20 x 8 x 20	15 x 4 x 15 15 x 6 x 15	10 x 10				3, 6, 10
	10 x 10 10 x 20 25 x 20 45 x 15	4 x 4, 6 x 6 10 x 10, 12 x 12 15 x 15, 20 x 20 25 x 25, 30 x 30	4 x 8, 6 x 6 6 x 10, 10 x 10 10 x 12, 10 x 15 12 x 12, 12 x 15 15 x 10, 15 x 15 15 x 20, 15 x 25 20 x 10, 20 x 20 20 x 25, 25 x 15 25 x 25, 25 x 30 30 x 12, 30 x 15 30 x 30	8 x 3 x 8, 10 x 5 x 10 10 x 5 x 15, 12 x 5 x 12 12 x 5 x 15, 14 x 5 x 14 15 x 7 x 15, 15 x 7 x 20 15 x 7 x 25, 16 x 8 x 16 16 x 8 x 20, 16 x 8 x 25 20 x 9 x 20, 20 x 9 x 25 25 x 10 x 25, 25 x 10 x 30 30 x 12 x 30, 30 x 12 x 35	8 x 3 x 8, 8 x 3 x 10 10 x 5 x 10, 12 x 5 x 12 15 x 7 x 15, 16 x 8 x 15 20 x 9 x 20, 20 x 9 x 25 25 x 10 x 20, 25 x 10 x 25 30 x 10 x 30, 30 x 10 x 35	10 x 10, 12 x 12 15 x 10, 18 x 18 20 x 12	38 x 40	15, 20, 30, 40	4, 5, 6, 7, 8, 10, 12	
				15 x 7 x 15 20 x 9 x 20 25 x 10 x 25	15 x 7 x 15 20 x 9 x 20 25 x 10 x 25			15, 20, 30, 40		
						15 x 15 x 7				
15 x 15 15 x 18	10 x 10 20 x 10 20 x 20 30 x 30	6 x 6, 10 x 10 10 x 12, 20 x 8 20 x 10, 20 x 20	4 x 4, 6 x 6 6 x 10, 10 x 12 15 x 06, 15 x 18 20 x 20, 25 x 25 30 x 12	10 x 5 x 10, 13 x 5 x 13 15 x 5 x 15, 16 x 7 x 16 20 x 8 x 20, 25 x 10 x 25	15 x 4 x 15, 15 x 6 x 15 20 x 8 x 15, 25 x 10 x 25 25 x 13 x 25	10 x 5, 10 x 10 14 x 14, 15 x 10 15 x 15, 20 x 20 25 x 25	15 x 16, 22 x 25 25 x 27, 30 x 34 35 x 39	15, 19, 20, 30, 35, 40, 45, 60	35 x 18 x 25 50 x 30 x 30	6
10 x 12	35 x 17 45 x 23	4 x 4 10 x 10 20 x 20	4 x 4 4 x 10 6 x 6 10 x 12 15 x 18	14 x 5 x 14	20 x 8 x 20	14 x 14	25 x 25 35 x 35			5, 5, 8
10 x 12 15 x 15 20 x 20	45 x 16	10 x 10	10 x 12 15 x 18 15 x 6 20 x 20 30 x 10	14 x 5 x 14 15 x 7 x 15	25 x 13 x 25	10 x 10 15 x 10 15 x 15 20 x 20			50 x 40 x 40	
10 x 12 15 x 15 20 x 20	45 x 16	10 x 10	10 x 12 15 x 18 15 x 6 20 x 20 30 x 10	14 x 5 x 14 15 x 7 x 15	25 x 13 x 25	10 x 10 15 x 10 15 x 15 20 x 20			50 x 40 x 40	
10 x 12 15 x 15 20 x 20	45 x 16	10 x 10	10 x 12 15 x 18 15 x 6 20 x 20 30 x 10	14 x 5 x 14 15 x 7 x 15	25 x 13 x 25	10 x 10 15 x 10 15 x 15 20 x 20			50 x 40 x 40	

Click [here](#) to request your Free Trial today!

For further dimensions and special types of media specific for your application, please contact our sales representatives.

Plastic Media

ActOn plastic media is manufactured using the same high standards as the ceramic media. Even though this media does not cut as much as the ceramic one, plastic media provides a smoother finish and is highly recommended to process parts manufactured out of softer materials.

Plastic media does not chip due to the materials used in manufacturing. Furthermore, this media can be used for a long time even if it wears down, as it will maintain its shape.

How to order with ActOn:

- 1 Choose grade
Example: BR
- 2 Choose shape
Example: Cone
- 3 Choose measurement
Example: 10X10

Media Grade	Grinding Performance									
		C Cones	Pa Paracones	P Pyramid	T Tetra	Tr Tristar	W Wedge	O Octocone	B Button	ACT Angle Cut Triangle
		a	a x b	a	a	a x b	a x b x c	a x b x c	a x b	a x b
YL		10, 12, 14 16, 20, 25 30, 40, 50 60, 70	20 x 20, 30 x 30 40 x 40, 50 x 50 60 x 60, 70 x 70	5.5 6.5	10, 12, 14 16, 20, 30 40, 50, 60, 70	20 x 20, 30 x 30 40 x 40, 50 x 50 70 x 70	20 x 12 x 12	65 x 65 x 35	14 x 5	40 x 25
P2F		10, 12, 14 16, 20, 25 30, 40, 50 60, 70	20 x 20, 30 x 30 40 x 40, 50 x 50 60 x 60, 70 x 70	5.5 6.5	10, 12, 14 16, 20, 30 40, 50, 60, 70	20 x 20, 30 x 30 40 x 40, 50 x 50 70 x 70	20 x 12 x 12	65 x 65 x 35	14 x 5	40 x 25
PMD		10, 12, 14 16, 20, 25 30, 40, 50 60, 70	20 x 20, 30 x 30 40 x 40, 50 x 50 60 x 60, 70 x 70	5.5 6.5	10, 12, 14 16, 20, 30 40, 50, 60, 70	20 x 20, 30 x 30 40 x 40, 50 x 50 70 x 70	20 x 12 x 12	65 x 65 x 35	14 x 5	40 x 25
BL		10, 12, 14 16, 20, 25 30, 40, 50 60, 70	20 x 20, 30 x 30 40 x 40, 50 x 50 60 x 60, 70 x 70	5.5 6.5	10, 12, 14 16, 20, 30 40, 50, 60, 70	20 x 20, 30 x 30 40 x 40, 50 x 50 70 x 70	20 x 12 x 12	65 x 65 x 35	14 x 5	40 x 25
PIK		10, 12, 14 16, 20, 25 30, 40, 50 60, 70	20 x 20, 30 x 30 40 x 40, 50 x 50 60 x 60, 70 x 70	5.5 6.5	10, 12, 14 16, 20, 30 40, 50, 60, 70	20 x 20, 30 x 30 40 x 40, 50 x 50 70 x 70	20 x 12 x 12	65 x 65 x 35	14 x 5	40 x 25
P3W		10, 12, 14 16, 20, 25 30, 40, 50 60, 70	20 x 20, 30 x 30 40 x 40, 50 x 50 60 x 60, 70 x 70	5.5 6.5	10, 12, 14 16, 20, 30 40, 50, 60, 70	20 x 20, 30 x 30 40 x 40, 50 x 50 70 x 70	20 x 12 x 12	65 x 65 x 35	14 x 5	40 x 25
PSG		10, 12, 14 16, 20, 25 30, 40, 50 60, 70	20 x 20, 30 x 30 40 x 40, 50 x 50 60 x 60, 70 x 70	5.5 6.5	10, 12, 14 16, 20, 30 40, 50, 60, 70	20 x 20, 30 x 30 40 x 40, 50 x 50 70 x 70	20 x 12 x 12	65 x 65 x 35	14 x 5	40 x 25
PDV		10, 12, 14 16, 20, 25 30, 40, 50 60, 70	20 x 20, 30 x 30 40 x 40, 50 x 50 60 x 60, 70 x 70	5.5 6.5	10, 12, 14 16, 20, 30 40, 50, 60, 70	20 x 20, 30 x 30 40 x 40, 50 x 50 70 x 70	20 x 12 x 12	65 x 65 x 35	14 x 5	40 x 25
PSE		10, 12, 14 16, 20, 25 30, 40, 50 60, 70	20 x 20, 30 x 30 40 x 40, 50 x 50 60 x 60, 70 x 70	5.5 6.5	10, 12, 14 16, 20, 30 40, 50, 60, 70	20 x 20, 30 x 30 40 x 40, 50 x 50 70 x 70	20 x 12 x 12	65 x 65 x 35	14 x 5	40 x 25
P7M		10, 12, 14 16, 20, 25 30, 40, 50 60, 70	20 x 20, 30 x 30 40 x 40, 50 x 50 60 x 60, 70 x 70	5.5 6.5	10, 12, 14 16, 20, 30 40, 50, 60, 70	20 x 20, 30 x 30 40 x 40, 50 x 50 70 x 70	20 x 12 x 12	65 x 65 x 35	14 x 5	40 x 25
BR		10, 12, 14 16, 20, 25 30, 40, 50 60, 70	20 x 20, 30 x 30 40 x 40, 50 x 50 60 x 60, 70 x 70	5.5 6.5	10, 12, 14 16, 20, 30 40, 50, 60, 70	20 x 20, 30 x 30 40 x 40, 50 x 50 70 x 70	20 x 12 x 12	65 x 65 x 35	14 x 5	40 x 25
P62		10, 12, 14 16, 20, 25 30, 40, 50 60, 70	20 x 20, 30 x 30 40 x 40, 50 x 50 60 x 60, 70 x 70	5.5 6.5	10, 12, 14 16, 20, 30 40, 50, 60, 70	20 x 20, 30 x 30 40 x 40, 50 x 50 70 x 70	20 x 12 x 12	65 x 65 x 35	14 x 5	40 x 25
PSS		10, 12, 14 16, 20, 25 30, 40, 50 60, 70	20 x 20, 30 x 30 40 x 40, 50 x 50 60 x 60, 70 x 70	5.5 6.5	10, 12, 14 16, 20, 30 40, 50, 60, 70	20 x 20, 30 x 30 40 x 40, 50 x 50 70 x 70	20 x 12 x 12	65 x 65 x 35	14 x 5	40 x 25
PTX		10, 12, 14 16, 20, 25 30, 40, 50 60, 70	20 x 20, 30 x 30 40 x 40, 50 x 50 60 x 60, 70 x 70	5.5 6.5	10, 12, 14 16, 20, 30 40, 50, 60, 70	20 x 20, 30 x 30 40 x 40, 50 x 50 70 x 70	20 x 12 x 12	65 x 65 x 35	14 x 5	40 x 25

Click [here](#) to request your Quotation today!

For further dimensions and special types of media specific for your application, please contact our sales representatives.

Agro & Pre-treated

ActOn agro and pre-treated media is manufactured out of corn cob or walnut shell and can be used for drying, polishing and cleaning. All of our agro and pre-treated medias are bovine free.

To collect the fine dust resulting from using the maizorb in the drying process, ActOn recommends the usage of a Dust Extractor for Maize Application.

Media Type		Material Specification	Media Size	Approx. Grain Size in mm
Maizorb		The maizorb grains have high abrasion resistance, good moisture absorption and low specific gravity. This agro product is best suited for drying, cleaning and polishing components.	Maize 4	450 - 800
			Maize 6	350 - 650
Pre-treated Maizorb		The pre-treated maizorb has been developed to produce a bright mirror finish. This can be used both in vibratory and high energy machines.	Pre-treated Maize 4	450 - 800
			Pre-treated Maize 6	350 - 650
			Pre-treated Maize 8	250 - 400
			Pre-treated Maize 10	160 - 250
			Pre-treated Maize 12	150 - 200
			Pre-treated Maize 16	100 - 150
			Pre-treated Maize 20	0.75 - 100
			Pre-treated Maize 30	0.25 - 0.75
			Pre-treated Maize 80	0.20 - 0.55
			Pre-treated Maize 200	0 - 0.20
Walnut Shell		Walnut shells are hard and fibrous, and are known as 'soft abrasive'. Being extremely durable, walnut shells are used for the cleaning and polishing of heat-treated components, jewellery, surgical components, watches, etc.	Walnut Shell 1/12	2.36 - 100
			Walnut Shell 2/12	2.00 - 100
			Walnut Shell 3/16	140 - 0.71
			Walnut Shell 4/20	100 - 0.60
			Walnut Shell 5/30	0.60 - 0.30
Pre-treated Walnut Shell		The pre-treated walnut shell imparts high lustre on components. It has been proven that on certain materials, pre-treated walnut produces a much brighter finish than pre-treated maizorb.	Pre-treated Walnut Shell 1/12	2.36 - 100
			Pre-treated Walnut Shell 2/12	2.00 - 100
			Pre-treated Walnut Shell 3/16	140 - 0.71
			Pre-treated Walnut Shell 4/20	100 - 0.60
			Pre-treated Walnut Shell 5/30	0.60 - 0.30

Special Media

Our R&D department is continuously working closely with our clients to develop a range of Special Medias suitable for particular finishing requirements.

Special Plastic Media

ActOn special plastic media has been developed to finish components manufactured out of non-ferrous materials, semi-precious and precious alloy and also stainless steel. Some of the applications include grinding and polishing. ActOn offers different types of special plastic media:

- SPM4 (particularly good for achieving a low surface finish on medical implants manufactured using materials such as Cobalt Chrome and Stainless Steel).
- SPM7, SPM6 and SPM5 (recommended for removing machining lines on Cobalt Chrome and Stainless Steel parts, SPM7 being the most aggressive plastic media option).

Wood Media

Wood media is generally used alongside with ActOn compounds to achieve a smooth finish, a polished finish, dry tumbling or for light deburring. ActOn offers the wooden media in different sizes and shapes:

Cubes, Diamonds, Pegs.

This media can be used in different applications on part materials such as plastic, nylon, ceramics, wood and metals.

Stainless Steel

Stainless Steel media is mainly used for burnishing, cleaning and light deburring. This media wears very slowly with a life of up to 10,000 hours. For a burnishing finish, it is recommended that the media is used with the burnishing compound in the B Series machine. Due to the weight of the media, the B series provides added reinforcement.

ActOn Stainless Steel Media is manufactured in different shapes and sizes:

- Stainless Steel Balls (available in sizes ranging from 2mm to 6mm in diameter).
- Stainless Steel Ball Cones (dimensions on request).
- Stainless Steel Pins (dimensions on request).

Shot Blasting & Peening Media

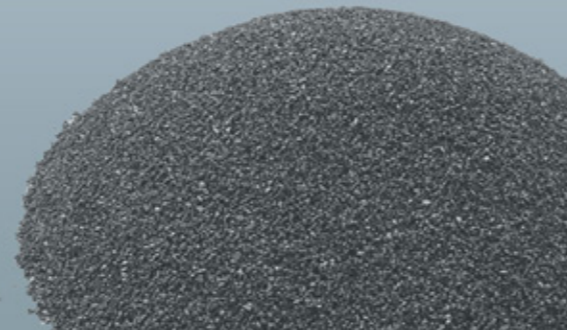
ActOn offers a wide range of Abrasive Consumables for shot blasting and peening processes. Selecting the right blasting media is essential and depends upon the condition of the material before blasting and the finish required after blasting.

Metallic Blasting Media

ActOn metallic blasting media range includes:

- **Steel shot:** great for cleaning, stripping, smoothing, polishing and improving a metal surface.
- **Steel grit:** an aggressive blasting media, used for removing any contamination from steel and foundry metals & to obtain an etched surface finish on components manufactured out of hard metals.
- **Chilled iron grit:** recommended for quick cleaning, etching and roughening up hard surfaces. This is a hard abrasive media, suitable for blasting rooms.

- **Cut wire shot:** available in stainless steel, aluminium, copper, zinc and nickel version, this can be used for peening, cleaning & vibratory finishing.



Aluminium Oxide

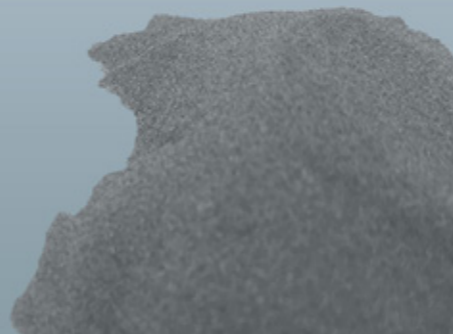
An aggressive and tough media suitable for different applications such as general blasting, surface finishing, grinding, polishing, matte finishing, edge rounding and cleaning and preparing the component surface prior to plating or painting.

Aluminium oxide is a durable abrasive media which can be recycled a number of times, making it a cost effective solution. Aluminium Oxide is much lighter than other medias, thus minimising the possibility of parts made out of thin materials being damaged in the finishing process.

Nonetheless, Aluminium Oxide has the properties which allow this media to deburr parts made from hard metals and sintered carbide.

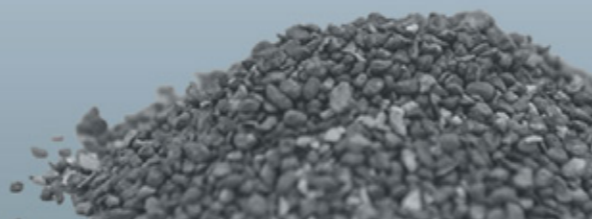
ActOn offers the following options:

- **Brown Aluminium Oxide** (high performance for aerospace and automotive industries).
- **White Aluminium Oxide** (commonly used in the medical industry).



Walnut Shell

Walnut shell is great for removing coatings, cleaning, deburring and de-flashing. This media is hard and fibrous and it is known as 'soft abrasive'. Being extremely durable it can be reused in all types of blasting equipment. ActOn walnut shell is bovine free.



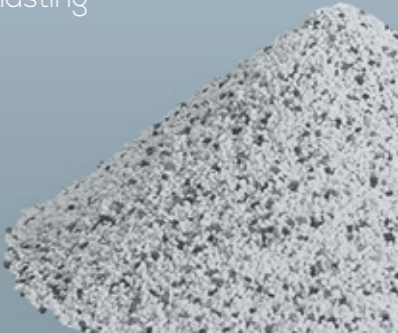
Silicon Carbides

Silicon carbide is the most aggressive and tough media recommended for general blasting, glass and stone etching, aggressive deburring, scale removal and smoothing components' edges. ActOn silicon carbide is a very fast cut media and due to its hardness, it takes less time to process the components in comparison to other blasting media. Hence this media can be reused for a longer period of time, making it also a cost effective product.



Plastic Blast Media

ActOn plastic blast media is recommended for paint and coatings stripping from components manufactured out of soft metals, plastic and composites. This media is widely used in aerospace and automotive industry for blasting applications.



Glass Beads

Glass beads are great for obtaining a clean, smooth, bright or satin finish. This media is a cost effective solution as it can be recycled. Glass beads are mainly used in the shot blasting cabinets.



Ceramic Beads

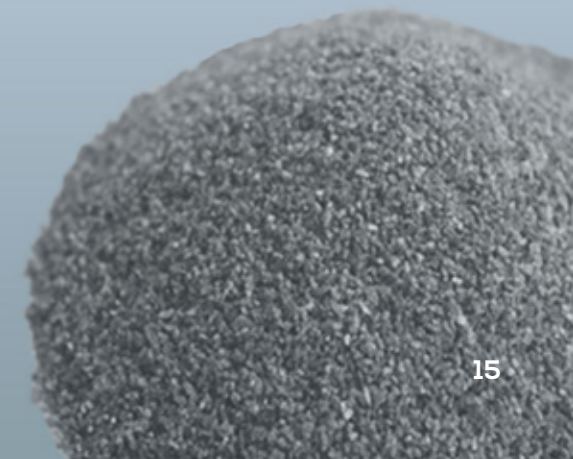
Ceramic beads can be used to process steel, aluminium, and non-ferrous alloys. Applications include cleaning, smoothing, satin finishing, removal of coatings, rust and oxides and deburring. This is a tough media that can be used both in the air and wet blasting process.



Brown, Pink and White Alumina

We recommend using ActOn Alumina media for corrosion removal, cleaning, etching and decorating.

- **Brown Alumina:** a fast cutting and tough media, widely used in the aerospace and automotive industry.
- **White Alumina:** ideal for processes where no contamination is allowed, being used for finishing materials such as titanium, stainless steel, crystal glassware.
- **Pink Alumina:** tougher than the white one being used both in wet and dry blasting process. Applications include removal of scale, paint, rust, hard deposits, cleaning, matte finishing, decorative finishing and glass frosting.



For dimensions and special types of media specific for your application, please contact our sales representatives.

Liquid Compounds

ActOn compounds are specially formulated for vibratory and high energy finishing machines. They comprise of abrasives, brighteners, lubricating agents, cushioning materials and cleaning agents.

Our R&D department has developed specially formulated, environmentally friendly and biodegradable compounds that suit customers' requirements. They are continuously focused on improving our existing compounds and creating new ones.

Due to varying properties of metals and alloys, one chemical formulation is not enough for all engineering materials. Therefore, it is prudent to take expert advice and recommendations when selecting suitable compounds for specific requirements.

OOO Excellent OO Good O Average

Click [here](#) to request your Free Trial today!

	Material Name	LQ18M	LQ18	LQ9	LQ60	LQ4	LQ14	LQ15D	LQ17	LQ19	LQ30	LQ191
ActOn liquid compound details	Description	Light de-scaling, removal of rust and discolouration due to heat treatment processes. Removes metal oxides to produce a bright polish, retaining base metal colour.	Acidic compound for removal of light heat treatment, scale, brightening and polishing suitable for ferrous and non-ferrous metals. Widely used in the aerospace sector.	Specially formulated for polishing and brightening of ferrous and non-ferrous metals.	A low-cost, multi-purpose compound for all metals. Grinding, deburring, polishing on all metals. Used for obtaining bright colour throughout the process. Can be used with all types of media and for self tumbling operations.	Low foaming compound suitable for cleaning, brightening and polishing of all metals.	General cleaner with good polishing properties for all metals.	Specially formulated for die-cast products. Excellent cleaning and emulsifying properties.	Multi-purpose liquid for cleaning ferrous metals. Contains strong corrosion inhibitor. Mainly use on ferrous metal.	Multi-purpose compound for all metals.	Concentrated compound for all metals. Good cleaner and polisher with corrosion inhibitor.	Cleaning and polishing of ferrous metals with strong corrosion inhibitor. Low foaming compound designed for ferrous metals.
	PH	1-2	2.5-3	<4	10-11	8-8.5	8-8.5	8-8.5	8-8.5	8-8.5	8-8.5	8-8.5
	Colour	Pale Gold	White Cloudy	Cream	Pale Yellow	Pale Blue	Golden	Golden Yellow	Pale Green	Shades of Blue	Golden	Pale Gold
Application guide and characteristics	Brightening/ Polishing	OOO	OO	OOO	OO	OO	OO	OO	OO	O	OOO	OO
	Ball Burnishing	OO	OO	OO	O	OO	O	OO	OO	OO	OOO	OO
	Cleaning				OO	OO	OO	OOO	OOO	OO	OO	OOO
	Corrosion Inhibitor				OO	O	O		OO	OO	OO	OOO
	Degreasing/ De-oiling							OO				
	Descaling / Derusting / Light Heat Treatment	OO	OOO									
	Foam	O		OOO	O	O	O	O	O	O	O	OO
	Pickling	OO	OOO	OOO								
Suitable for Recirculation	Recirculation of compounds can be adapted to suit specific processes and applications.											
Ferrous Material	Carbon Steel	OOO	OOO				OOO		OOO		OOO	OOO
	Hardened Steel	OOO	OOO				OOO		OOO		OOO	OOO
	Iron	OOO	OOO				OOO		OOO		OOO	OOO
	Stainless Steel	OOO	OOO				OOO		OOO		OOO	OOO
Non-ferrous Material	Aluminium							OOO		OOO		
	Brass							OOO		OOO		
	Ceramic							OO				
	Copper	OOO	OOO					OOO		OOO		
	Magnesium							OO				
	Plastic							OO				
	Titanium	OOO	OOO					OO				
Zinc							OOO		OOO			
All Metals	All Metals	OO	OO	OOO	OOO	OO	O			OO	OO	

Liquid Compounds

○○○ Excellent
○○ Good
○ Average

	Material Name	LQ16	LQ40	LQ6	LQ20	LQ110	LQ191S	LQ30/F2	LQ11	LQ111	LQ111S	F2C	LQ10
	Description	Concentrated cleaner and polisher for non-ferrous metals.	Excellent cleaning properties on non-ferrous metals. Keeps media and parts free of dirt and metal fines. Higher percentage delivers a brighter finish.	A very low foaming compound for zinc alloys and copper alloys. For fine cutting semi-bright finishing, use plastic media. Contains cleaning agent suitable for zinc alloys to give a smooth finish. Often used prior to electro-plating.	Powerful degreaser and cleaner with good inhibitor qualities designed for ferrous metals.	Degreaser and cleaner suitable for heavy machining oils and lubricants. Designed for ferrous metals. Saponify and emulsify oils, greases. Inhibits corrosion. Low foaming properties.	Cleaning and polishing of ferrous metals with strong corrosion inhibitor. Low foaming compound designed for ferrous metals.	Good cleaner and polisher with corrosion inhibitor.	Powerful degreaser and cleaner with good inhibitor qualities designed for ferrous metals.	Powerful degreaser and cleaner suitable for heavy machining oils and lubricants. Designed for ferrous metals. Saponify and emulsify oils, greases. Inhibits corrosion. Low foaming properties.	Cleaning, degreasing of ferrous metals. Saponify and emulsify oils and greases. Used in various industrial washing and spraying machines for degreasing and cleaning.	Powerful degreaser and cleaner with excellent inhibitor qualities. Designed for ferrous metals.	Leaves surface clean and bright. Excellent cleaning. Mainly used with plastic media.
ActOn liquid compound details	PH	8.5-9	8.5-9	9-10	10-11	9-9.5	9	9-10	10-11	10-11	10-11	10-11	11-12
	Colour	Pale Yellow	Golden	Golden	Colourless	Colourless	Pale Gold	Golden	Colourless	Colourless/Golden	Colourless/Golden	Colourless	Colourless
Application guide and characteristics	Brightening/Polishing	○○○	○○	○○			○○○	○○○					○○
	Ball Burnishing	○○○	○○					○○					
	Cleaning	○○	○○○	○○	○○	○○	○○○	○○	○○○	○○○	○○○	○○○	○○○
	Corrosion Inhibitor				○○	○○	○○○	○○○	○○	○○	○○○	○○○	○○○
	Degreasing/De-oiling				○○	○○		○○	○○○	○○○	○○○	○○○	○○
	Descaling / Derusting / Light Heat Treatment												
	Foam	○	○	○	○	○	○	○	○	○	○	○	○
	Pickling												
Recirculation of compounds can be adapted to suit specific processes and applications.													
Ferrous Material	Carbon Steel		○○		○○	○○	○○○	○○○	○○○	○○○	○○○	○○○	
	Hardened Steel		○○		○○	○○	○○○	○○○	○○○	○○○	○○○	○○○	
	Iron		○○		○○	○○	○○○	○○○	○○○	○○	○○○	○○○	
	Stainless Steel		○○		○○	○○	○○○	○○○	○○○	○○○	○○○	○○○	
Non-ferrous Material	Aluminium	○○○	○○										○○○
	Brass	○○○	○○										○○○
	Ceramic	○○○	○○										
	Copper	○○○	○○○	○○○									○○○
	Magnesium	○○○	○○										
	Plastic	○○○	○○										
	Titanium	○○○	○○										
Zinc	○○○	○○○	○○○										○○○
All Metals	All Metals	○○		○							○		

Powder Compounds

As well as a comprehensive range of liquid compounds, ActOn Finishing offers a full range of Powders & Pastes. These are used for grinding, cleaning and polishing of ferrous and non-ferrous materials for vibratory and high energy finishing machines.

OOO Excellent
OO Good
O Average

	Category	Abrasive Compounds						Polishing Compounds
	Material Name	A0	A1	A2	A3	A7	35F	P6
ActOn powder compound details	Description	An aggressive, coarse, concentrated, abrasive compound, used on harder metals for grinding, radiusing and the removal of heavy machine marks and burrs. Used with an abrasive media. It leaves the surface of components with a shot blast appearance.	It is a fast cutting compound for heavy deburring and combined with cleaning agents and is mainly used for ferrous components, brass cuttings and pressings. It leaves the surface with a matte finish.	It is a medium abrasive compound and is combined with cleaning agents.	It is a light deburring compound combined with cleaning agents for fine surface finishing of all materials, but mainly used on soft metals like zinc, brass or aluminium. It can also be used to bring back the surface on ceramic media which is contaminated.	It is a light grinding compound for cutting down and polishing and contains an extremely fine abrasive, which during the process breaks down into a slurry. This assists the polishing ingredients to impart a polished surface.	This is used for cutting and polishing of non-ferrous metals and contains a soft abrasive with polishing agents.	It is used for polishing copper and its alloys with non abrasive media. A silky foam lather is built which enhances the polishing process.
	PH	9-10	11-12	11-12	10-11	9-10	5-6	9-10
	Colour	Dark Brown	White/Brown	White/Light Brown	White	Dark Brown	Off White	White
Application guide and characteristics	Brightening/Polishing	O	O	O	O	OO	OO	OOO
	Ball Burnishing							OOO
	Cleaning	OOO	OOO	OOO	OOO	O		OOO
	Corrosion Inhibitor	OO	OO	OO		O		
	Degreasing/De-oiling							
	Descaling /Derusting / Light Heat Treatment	OOO	OOO	OO	O			
Ferrous Material	Carbon Steel	OOO	OOO	OOO		OOO		
	Hardened Steel	OOO	OOO	OOO		OOO		
	Iron	OOO	OOO	OOO				
	Stainless Steel	OOO	OOO	OOO				
Non-ferrous Material	Aluminium				OOO		OOO	
	Brass		OOO		OOO		OOO	OOO
	Ceramic						OOO	
	Copper						OOO	OOO
	Magnesium						OOO	
	Plastic						OOO	
	Titanium						OOO	
Zinc				OOO		OOO		
All Metals	All Metals			OO	OO			O

Powder Compounds

Excellent
 Good
 Average

[Click here](#) to request your Quotation today!

	Category	Polishing Compounds		Cleaning and Degreasing Compounds					
	Material Name	P51	P71	C1	C4	C5	C6	Actoclean BT (C7)	C50
ActOn powder compound details	Description	A polishing compound for aluminium with extra brightening and polishing agents giving superb results. Mainly used with steel media or plastic media to give a semi-polished matte finish.	It produce a clean, bright luster and keeps the metal in solution, allowing the process to continue for long periods. This is suitable for Zinc and Zinc Alloys. Mainly used with non-abrasive media.	Used to remove grease, oils and lubricating fluids, leaving metal components clean and ready for further processes.	Used for cleaning of ferrous components and can be used with all types of media.	It keeps processes free of grease and oil. Good rust inhibitor. Mainly used on ferrous components.	Cleaning compound with brightening. Used on ferrous components to give a clean, bright surface finish. It contains a strong rust inhibitor. Abrasive and polishing media can be used with C6 compound.	Used mainly on ferrous components to give a clean surface finish. It contains strong rust inhibitor.	Suitable for processing all metals. Copes with all types of oily and greasy components. Contains corrosion inhibitor and can be used with all types of media.
	PH	9-10	9-10	12-13	12-13	12-13	11-12	11-12	10-11
	Colour	White	White	White	White	White	White	White	White
Application guide and characteristics	Brightening/Polishing	000	000	00		00	00		
	Ball Burnishing	000							
	Cleaning	000	000	000	000	000	000	000	000
	Corrosion Inhibitor					00	000	000	000
	Degreasing/De-oiling			000		000		000	000
	Descaling /Derusting / Light Heat Treatment		0						00
	Foam	0	0	0	00	0	0	0	0
Ferrous Material	Carbon Steel				000	000	000	000	000
	Hardened Steel				000	000	000	000	000
	Iron				000	000	000	000	000
	Stainless Steel				000	000	000	000	000
Non-ferrous Material	Aluminium	000					000		
	Brass	000					000		
	Ceramic								
	Copper								
	Magnesium								
	Plastic								
	Titanium								
Zinc		000							
All Metals	All Metals	0		000	000				00

Special Compounds

○○○ Excellent
○○ Good
○ Average

	Material Name	Turbocut	Chemcut	Actogrind	Vibropol	AD1	Vibroshine	Actopol 108	Actopol 106	Separating Compound
ActOn Special compound details	Description	A near neutral material to give a safe process for the rapid removal of metal on ferrous components. Ideally suited for steel and hardened steels in the hand tool industries. After the Turbocut process, the surface is ultra smooth and can be plated directly, eliminating expensive hand polishing.	Removal of grinding, finishing and machine marks. Recommended for steel, hardened steel and certain stainless steels only to give rapid metal cut-down and levelling, producing super smooth surfaces, ready for polishing and electro-plating if required. Mainly used with non-abrasive media.	This is an abrasive paste that is used in Vibratory bowl machines and it is used for both ferrous and non-ferrous parts.	This is a polishing paste and can be used on all metals.	Used for descaling and rust removal of oxides, heat treatment, discolouration, welding scale, some carbon deposits, hard-water scale. Not used on zinc or magnesium.	For use in vibratory beds with crushed walnut shell media for bright polishing of small ferrous and non-ferrous items.	A fine, long lasting clean cutting abrasive for normal burr and surface finish improvement. It prevents corrosion on ferrous parts and produces a clean smooth finish on all metal parts. This is used with ceramic, natural or soft metallic media.	This is an abrasive compound for normal deburring and stock removal. It can be used with ceramic, natural or soft metallic medias, and is excellent for part-on-part processing. This produces a clean smooth finish on all metal parts.	This is used to keep flat parts from sticking to each other when wet in a process. It is used in all types of vibratory and barrel finishing machines with all metals.
	PH	6-7	1-2	6-7	8.5	<1.5	6-7	9.3	9.0	
	State	Liquid	Powder	Paste	Paste	Powder	Paste	Powder	Powder	Granules like Beads
	Colour	Clear/pale	White	Brown	White	White/Off White	White	Off White	Off White	White
Application guide and characteristics	Brightening/ Polishing			○○	○○○		○○○			
	Removal of machining/ grinding lines	○○○	○○○	○○○				○○○	○○○	
	Cleaning	○○			○○			○○○	○○○	
	Corrosion Inhibitor	○○						○○○	○○○	
	Degreasing/ De-oiling						○○○			
	Descaling / Derusting / Light Heat Treatment	○○			○○		○○○			
	Foam	○	○	○	○	○	○	○	○	N/A
Ferrous Material	Carbon Steel	○○○	○○○			○○○				
	Hardened Steel	○○○	○○○			○○○				
	Iron	○○	○○○			○○○				
Non-ferrous Material	Stainless Steel	○○	○○			○○○				
	Aluminium					○○○				
	Brass					○○○				
	Ceramic					○○○				
	Copper					○○○				
	Magnesium									
	Plastic						○○○			
All Metals	Titanium					○○○				
	Zinc									
All Metals	All Metals			○○○	○○○		○○○	○○○	○○○	○○○

Water Treatment System

ActOn’s effective water treatment system is a combination of equipment technology (ActOn Centrifuge System) and water cleaning products (flocculants and coagulants).

The ActOn Centrifuge system is connected to the mass finishing equipment. The effluent discharged from the finishing equipment is collected in a tank, where a strainer stops the heavy particles. The dirty water is pumped into the Centrifuge chamber which rotates at high speed to separate the impurities from the water.

For special purpose, the flocculants can be added in the water tank for better coagulation and precipitation of the contaminants in the sludge basket provided in the Centrifuge. The coagulants and flocculants are used to separate the suspended solids from water.

ActOn Coagulants

Coagulants are added into the solution to neutralise the negative charges on non-settable solids. The coagulants have an opposite charge to the suspended solids.

Once the charge is neutralised, the small suspended particles are capable of sticking together. These slightly larger particles are called pin flocs. Water surrounding the newly formed pin flocs should be clear. If not, coagulation and some of the particle’s charge have not been neutralised. More coagulant chemicals may need to be added.

Over-mixing of the coagulant with the suspended solids in the water does not affect coagulation, but insufficient mixing will leave this step incomplete.

Coagulants			
Product name	AC PAC	Ferric Sulphate	AC CL520
Liquid / Powder	Liquid	Liquid	Liquid
Anionic / Cationic	Cationic	Cationic	Cationic
Application	Coagulation of Metal Finishing Effluents – Product Choice Dependent on Chemical Nature of Effluent and Particle Size of Solids		
pH	1.8-2.5	0.5-1	5.5-6.5
Recommended Dosage	200-500ppm	200-500ppm	20-50ppm

ActOn Flocculants

Flocculation is the formation of larger flocs using high molecular weight polymers. These products help to bridge, bind and strengthen the pin flocs formed, adding weight and increasing settling rate. Once the floc has reached its optimum size and strength, the water is ready for sedimentation.

It is important not to over-mix the flocculent with the water as once the flocs formed are torn apart, it is not possible to get them to reform without the addition of more flocculent.

Flocculants						
Product name	AF AD985	AF AD987	AF AE66	AF 209	AF 990	AF A260
Liquid / Powder	Dewatered Liquid Emulsion	Dewatered Liquid Emulsion	Liquid Emulsion	Powder	Powder	Powder
Anionic / Cationic	Low Anionic	Mid Anionic	Mid Anionic	Very Low Anionic	Low Anionic	Low/Mid Anionic
Application	Flocculation of Metal Finishing Effluents – Product Choice Dependent on Chemical Nature of Effluent					
pH	3.5-4.5	3.5-4.5	6-8	6-8 (1%Soln)	6-8 (1%Soln)	6-8 (1%Soln)
Recommended Dosage	4-8ppm	4-8ppm	5-10ppm	3-5ppm	3-5ppm	3-5ppm

Flocculants							
Product name	AF A320	AF K540	AF K560	AF K580	AF CE662	AF 528	AF CE682
Liquid / Powder	Powder	Powder	Powder	Powder	Liquid Emulsion	Powder	Liquid Emulsion
Anionic / Cationic	Mid Anionic	Mid Cationic	Mid/High Cationic	High Cationic	Mid/High Cationic	Anionic	High Cationic
Application	Flocculation of Metal Finishing Effluents – Product Choice Dependent on Chemical Nature of Effluent						
pH	6-8 (1%Soln)				4-6 (1%Soln)	6-8	4-6 (1%Soln)
Recommended Dosage	3-5ppm	5-10ppm	5-10ppm	5-10ppm	8-12ppm	5-10 ppm	8-12ppm

[Click here to request your Free Trial today!](#)

Value Added Service

On top of our state-of-the-art machinery and media, we also supply a range of support and training services.

Learn more on how you'll benefit:

Subcontract Services

High Energy and Vibratory Finishing Services

Our factory is well equipped with High Energy (HE) and Vibratory machines, which are designed and manufactured by our Engineers. The HE machines provide a speedy finishing solution, as well as a high quality finish to the parts, eliminating any need of fixturing and preventing their impingement. Along with the HE machines we also have Vibrota finishing equipment, which processes parts of variable sizes and batch quantities.



Shot Blasting and Peening Services

We offer shot blasting service from our Coventry facility to our customers in the Architectural, Automotive, Defence, Design, Food Manufacturing, Health and Safety, Marine, Steel Manufacturing and Profiling industries. Our service can achieve the desired Sa standards to ensure that the part's surface is cleaned to the specification. our applications include descaling, removing corrosion, mill scale, paint or rust, achieving a smooth finish, deflashing, polishing, strengthen the metal and more.



Precision Polishing

In order to provide you with complete surface finishing solutions, we offer a precision polishing service for components from various industry sectors. In combination with our barrelling capability, you'll benefit in terms of cost, delivery and quality. Our applications include removal of manufacturing defects on femurs and aerofoils, which are inherent in the casting and forging process.

Inspection

Our trained inspectors ensure every component is inspected to the required specification prior to delivery. The inspections can include visual, dimensional and surface finish measurements. Our document controls ensure that all inspections are recorded for traceability purposes.

Waste Water Treatment

During the finishing operation, the effluent can be polluted with oil, media and metal fines. It is critical that the effluent must be treated before going to drain, or if it is being recycled back into the system. Each area or district has its own discharge consent, hence the effluent must be analysed against this.

The effluent can be recycled, however there are certain applications where it is not possible. In that case, the treated effluent can be transferred directly to the drain. Recycling can save on the significant amount of water and compounds (greater than 90%) used.

We offer a range of flocculants (powder and liquid) coupled with our Centrifugal technology. Please refer to our waste water treatment brochure for more details.



After-sales, Training and Installation

We hire a number of highly trained staff, including engineers, who are on-call for all of your after-sales requirements. From installation and training, to maintenance and prompt professional advice, our finishing specialists are here for you every step of the way.

[Click here](#) to request your Free Trial today!

What Our Customers Say

“We stopped searching for a good quality polishing compound once we tested ActOn’s LQ9.”

“ We were facing difficulties in removing the machining lines on the components manufactured by us. The combination of ActOn media and compounds helped improve the finish and quality of our products.”

“ Regardless of day or time, their response to all technical enquiries is excellent. ”

Quality You Can See

We pride ourselves on our excellence, and over the years we have successfully demonstrated an ongoing compliance with ISO quality and environmental standards. We’re also an approved supplier for many of our industries, including medical and aerospace.

For ISO, we currently hold:



We're proud members of the 'Made in Britain' campaign.

we redefine

ActOn Finishing Limited
213 Torrington Avenue
Tile Hill, Coventry, CV4 9HN.
United Kingdom.

+44 (0) 24 7646 6914

enquiries@acton-finishing.co.uk

www.acton-finishing.co.uk

ACT-36-SFC
Issue 05